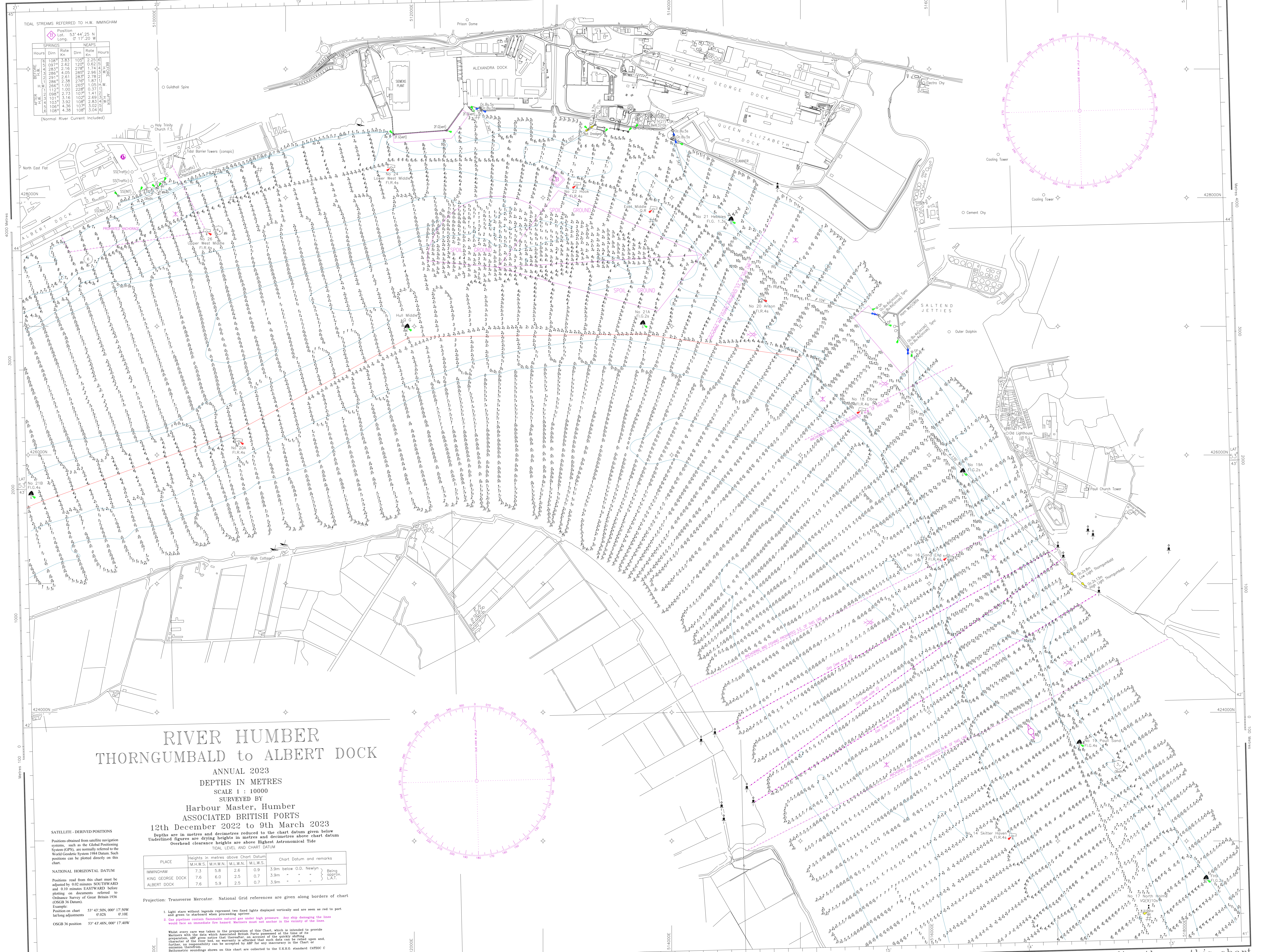


WGS 84 POSITIONS can be plotted directly on this chart

Copyright 2023. All rights reserved. No part of this product may be reproduced in any form (including photocopying or by electronic means) without prior permission.



TIDAL STREAMS REFERRED TO H.W. IMMINGHAM

SPRINGS	NEAPS		
Hours	Rate Km	Hours	Rate Km
10:08	3.81	10:05	2.25
10:24	2.62	12:00	0.62
10:39	1.16	12:07	0.21
10:54	4.05	28:07	2.96
11:09	2.86	28:14	1.50
11:24	1.00	28:21	0.37
11:39	3.92	10:07	1.41
11:54	1.16	10:14	0.62
12:09	3.92	10:21	2.83
12:24	2.86	10:28	1.50
12:39	1.00	10:35	0.37
12:54	4.38	10:42	3.04

(Normal River Current Included)

RIVER HUMBER THORNGUMBALD to ALBERT DOCK

ANNUAL 2023
DEPTHS IN METRES
SCALE 1 : 10000
SURVEYED BY
Harbour Master, Humber
ASSOCIATED BRITISH PORTS
12th December 2022 to 9th March 2023

SATELLITE-DERIVED POSITIONS
Positions obtained from satellite navigation systems, such as the Global Positioning System (GPS), are normally referred to the World Geodetic System 1984 Datum. Such positions can be plotted directly on this chart.

NATIONAL HORIZONTAL DATUM
Positions read from this chart must be adjusted by 0.02 minutes SOUTHWARD and 0.10 minutes EASTWARD before plotting on documents referred to Ordnance Survey of Great Britain 1956 (OSGB 36 Datum).

Example:
Position on chart 53° 43' 50N, 000° 17' 50W
along adjustments 0° 02S 0° 10E
OSGB 36 position 53° 43' 48N, 000° 17' 40W

Depths are in metres and decimetres reduced to the chart datum given below
Underlined figures are drying heights in metres and decimetres above chart datum
Overhead clearance heights are above Highest Astronomical Tide

TIDAL LEVEL AND CHART DATUM

PLACE	Heights in metres above Chart Datum				Chart Datum and remarks
	M.H.W.S.	M.H.W.N.	M.L.W.N.	M.L.W.S.	
IMMINGHAM	7.3	5.8	2.6	0.9	3.9m below O.D. Newlyn } Being approx. LAT.
KING GEORGE DOCK	7.6	6.0	2.5	0.7	3.9m - - - - -
ALBERT DOCK	7.6	5.9	2.5	0.7	3.9m - - - - -

Projection: Transverse Mercator. National Grid references are given along borders of chart

1. Light stars without legends represent two fixed lights displayed vertically and are seen as red to port and green to starboard when proceeding upriver.
2. One pipeline contains flammable natural gas under high pressure. Any ship damaging the lines would face an immediate fire hazard. Mariners must not anchor in the vicinity of the lines.

Whilst every care was taken in the preparation of this chart, which is intended to provide Mariners with the data which International British Ports covering at the time of its preparation, full guarantee is not given. International British Ports covering at the time of its preparation, full guarantee is not given. International British Ports covering at the time of its preparation, full guarantee is not given. International British Ports covering at the time of its preparation, full guarantee is not given.

WGS 84 POSITIONS can be plotted directly on this chart